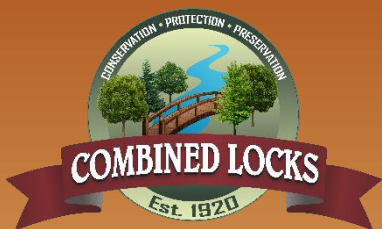


# Village of Combined Locks

2020

## Fall Newsletter



### Village President

John Neumeier

### Village Trustees

Justin Krueger  
Cathy Vander Zanden  
Tim Stutzman  
Ken Vander Wielen  
Brad Schinke  
Mike Rietveld

*Meetings are held on the 1st and 3rd Tuesdays of each month at 6:30pm. Agendas are posted at*

[www.combinedlocks.org](http://www.combinedlocks.org)

*Find agendas and minutes under Resources.*

### Village Administrator

Racquel Shampo-Giese  
gieser@combinedlocks.org

### Contact Us

405 Wallace Street  
Combined Locks WI 54113  
Phone: (920) 788-7740  
[www.combinedlocks.org](http://www.combinedlocks.org)

## PRESIDENTIAL ELECTION INFORMATION

The Presidential Election is Tuesday, November 3, 2020. The polls are open from 7:00am to 8:00pm. Choices for United States President and Vice President, Congressional District 8, Assembly District 3, and Outagamie County District Attorney, County Clerk, County Treasurer, and Register of Deeds seats are on the ballot.

**Not registered in Combined Locks yet or have a name or address change?** Get registered or update your information now and save time on Election Day. You can complete a voter registration form at: <https://myvote.wi.gov/> or at the Clerk's Office. The Clerk's Office hours are Monday through Friday from 7:30am to 4:00pm. If you have a driver's license or Wisconsin identification card, you will need it to complete the registration form. You will also need to provide proof of residence.

**Prefer to vote by Absentee Ballot?** Request your absentee ballot by mail at <https://myvote.wi.gov/>. You will need to upload your photo identification. You can also make this request at the Clerk's Office. You will still need to provide your photo identification. **OR** you can vote during the **In-Person Absentee Voting** period which is Tuesday, October 20<sup>th</sup> through Friday, October 30<sup>th</sup>. Contact the Clerk's Office with any questions regarding voting by absentee ballot. The telephone number is 920-788-7740 ext. 202.

## POLLING PLACE EXPECTATIONS

### State It

As always, you'll need to state your full name and address for the election official who checks you in. They'll check your information in the poll book. Understandably, some people are uneasy about announcing their name in public, but it is the law, and it helps ensure openness in elections.

### Show It

Next, it's time to show your photo ID. That way, poll workers can compare your face to your photo and confirm that you really are you.

The address on your ID doesn't have to be current. And the name on your ID doesn't need to be an exact match for your name in the poll book. (So, Richards who go by Rich, Bobs who are also Roberts and Susans with IDs that say Sue can relax.) Of course, there are certain requirements. Your ID should look like you, even if you've colored your hair, shaved your beard or lost some weight.

### Sign It

Finally, you'll sign the poll book (unless a physical disability prevents it). Your signature or mark should go right next to your name and address. Now you're ready to vote.

## Absentee ballot drop box

In addition to postal service return mail, in person drop-off and the night deposit, the Village of Combined Locks will have a ballot drop-off box available during the absentee period that may be used to return your absentee ballot.

### Reminder: Absentee Voter signature, witness signature and address

After completing and inserting ballot into return envelope and to make sure your ballot is counted, please fill out the required sections of the form on the absentee return envelope.

**Voter Signature:** You (or your assistant) must sign in the Certification of Voter section.

**Witness Signature and Address:** Your witness must sign and provide their full address (street number, street name and city) in the Certification of Witness section.

The form is an absentee ballot return envelope. It includes fields for 'Official use only' (Ward #, District), 'Voted in clerk's office' (checkbox), and 'WI' (state). Section 3, 'Sign and date this section', contains the 'CERTIFICATION OF VOTER' with a required signature and date. Section 4, 'Have your witness sign and write their address below', contains the 'CERTIFICATION OF WITNESS' with required signature and address. A 'CERTIFICATION OF ASSISTANT' section is also present at the bottom. Handwritten annotations include a blue 'X' in the voter signature line, a blue '2' in the voter date line, and a blue '1' in the witness signature line. Arrows from labels on the left point to these fields: 'Voter Signature' to the voter signature line, 'Voter date' to the voter date line, 'Witness Signature' to the witness signature line, and 'Witness address' to the witness address line.

**Official use only:** Ward # \_\_\_\_\_ District (if applicable) \_\_\_\_\_ Voted in clerk's office ☐

**3 Sign and date this section.**

**CERTIFICATION OF VOTER (Required)**

I certify, subject to the penalties for false statements of Wis. Stat. § 12.60(1)(b), that I am a resident of the ward of the municipality in the county of the state of Wisconsin indicated hereon, and am entitled to vote in the ward at the election indicated hereon; that I am not voting at any other location in this election; that I am unable or unwilling to appear at the polling place in the ward on election day, or I have changed my residence within the state from one ward to another later than 10 days before the election. I certify that I exhibited the enclosed ballot, unmarked, to the witness, that I then in the presence of the witness and in the presence of no other person marked the ballot and enclosed and sealed the ballot in this envelope in a manner that no one but myself and any person providing assistance under Wis. Stat. § 6.87(5), if I requested assistance, could know how I voted. I further certify that I requested this ballot.

X \_\_\_\_\_

▲ Signature of Voter ▲ (All voters must sign) Today's Date \_\_\_\_\_

**REQUIRED OF MILITARY AND OVERSEAS VOTER ONLY:** I further certify my birth date is: \_\_\_\_\_

**4 Have your witness sign and write their address below.**

**CERTIFICATION OF WITNESS (signature and address of witness are required)**

I, the undersigned witness, subject to the penalties for false statements of Wis. Stat. § 12.60(1)(b), certify that I am an adult U.S. Citizen and that the above statements are true and the voting procedure was executed as stated. I am not a candidate for any office on the enclosed ballot (except in the case of an incumbent municipal clerk). I did not solicit or advise the voter to vote for or against any candidate or measure. I further certify that the name and address of the voter is correct as shown.

1. \_\_\_\_\_

▲ Signature of ONE adult U.S. citizen witness ▲

2. \_\_\_\_\_

▲ If witnesses are Special Voting Deputies, both must sign. ▲

▼ Address of witness or addresses of both SVDs ▼

1. \_\_\_\_\_

2. \_\_\_\_\_

Provide house number and street name or fire number and street name, city, state and zip code. OR if your rural address does not include a house number/fire number and street name, provide rural route number and box number, city, state and zip code.

**CERTIFICATION OF ASSISTANT (if applicable) - assistant may also be witness**

certify that the voter named on this certificate is unable to sign his/her name or make his/her mark due

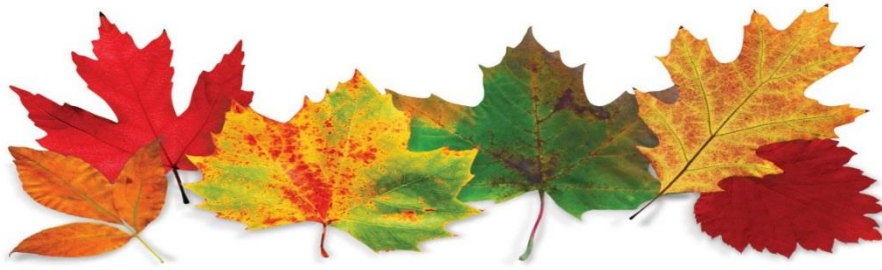
**To be counted, absentee ballots must be delivered to your polling place no later than 8:00 pm on Election Day, November 3<sup>rd</sup>, 2020**



## 2021 Election Schedule

February 16, 2021 Spring Primary – *If needed*  
April 6, 2021 Spring Election





## **YARD WASTE SITE HOURS OF OPERATION THROUGH NOVEMBER**

The Village of Combined Locks provides a yard waste site for village residents to dispose of grass clippings, pruning debris, *brush less than 4' long*, and garden material. **DO NOT** bring brush to the yard waste site that is 4' long or longer – request curbside brush collection instead. The yard waste site is located at 400 Park Street. The site is open seven days a week from 7:00am to 7:00pm. **ALL residents using the site must display the yard waste permit on their vehicle. Purchase your annual permit at the Clerk's Office - \$5.**

**The Yard Waste Site will close for the year as of November 20, 2020 (weather dependent).  
Waste oil is collected at this site all year.**

## **BRUSH COLLECTION REMINDERS**

1. Brush collection is weekly, each Wednesday, April thru July.
2. Beginning in August brush is collected on the 1<sup>st</sup> and 3<sup>rd</sup> Wednesdays of the month until November.
3. The first Wednesday of November is the last normal collection day for brush.
4. Residents are required to call the village at (920) 788-7740 ext. 1 to request curbside brush collection. Residents must call by no later than 3:00pm on the day preceding normal collection. As an alternative, residents may complete an on-line request form that is available on the village's web site, [www.combinedlocks.org](http://www.combinedlocks.org)
5. All brush must be on the terrace as of 6:30am on normal collection days.
6. Brush that is 2 to 4 feet in length must be placed curbside in bundles that are no larger than 2 feet in diameter and must be tied with twine or string. Do not include twigs.
7. Larger brush must be piled in a manner so that all cut ends are facing in one direction along the length of the terrace area. **Do Not bring larger brush to the yard waste site.**
8. Curbside brush collection does not include: collecting materials that have been cleared or removed from vacant land; materials that have been cut by a commercial tree service; and does not include bushes, shrubs, vines or hedge/tree clippings.
9. The Village will collect Christmas Trees in January – watch for the 2021 collection calendar.



**VETERANS OF FOREIGN WARS  
POST 10544 - COMBINED LOCKS**  
JOHN RIETVELD COMMANDER, 920-788-2493,  
Meetings Held: First Monday of Each Month at 6:00pm,  
Combined Locks Civic Center, Golden Agers Room

**NO ONE DOES MORE FOR VETERANS**





**SALES • SERVICE  
INSTALLATION**

**920.759.1478**  
730 W COUNTY ROAD KK • KAUKAUNA WI 54130  
[mail@berkenheating.com](mailto:mail@berkenheating.com) • [BerkenHeating.com](http://BerkenHeating.com)



turn to the experts

## **FALL LEAF COLLECTION**

Leaf collection to begin soon: Leaves are collected curbside in the fall of each year. Leaf collection typically begins around the second or third week of October and continues until about Thanksgiving.

Weather dictates the start and end dates of this service. Residents are asked to rake leaves into the gutter line. Please make sure that leaf piles are kept low so that children cannot be hidden from motorists' view and kept close to the curb so as not to interfere with traffic. ***No other debris (sticks, branches, grass clippings, or yard waste) is to be placed at the curb for collection.***

---



## **REFUSE AND LARGE RUBBISH COLLECTION REMINDERS**

Please take care to place your green trash cart **at least four (4) feet away** from your blue recycling cart. The distance is needed to insure that obstructions do not interfere with the tip-to-dump garbage and recycling collection systems.

Sec. 8-3-3 Recycling Program and Recycling Containers d) Recyclable material containers must be placed for collection by 6:30 a.m. on the day of collection, but not before 12:00p.m. of the day preceding the regularly scheduled collection.

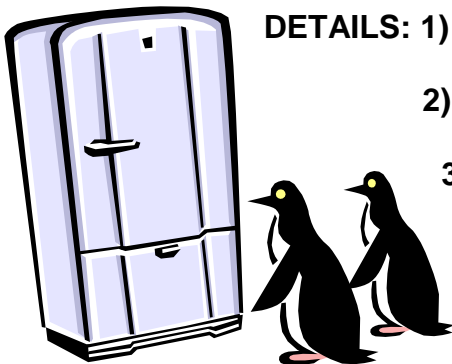
Sec 8-3-5 Garbage and Refuse Containers: Preparation for Collection d) Refuse containers must be placed for collection by 7:00 a.m. on the day of collection, but not before 12:00p.m. of the day preceding the regularly scheduled collection.

## ***Reminder:* LARGE RUBBISH COLLECTION REQUEST REQUIREMENT**

**WHAT:** Residents MUST request large rubbish collection at least 24-hours in advance

**HOW:** Call 920-788-7740 ext. 1 and leave a message with your address and a request for large rubbish collection or make the request online:

<http://www.combinedlocks.org/combinedlocks/departments/public+works/default.asp>



- DETAILS:**
- 1) Items must be curbside by 6:30am on the day of collection and no earlier than noon the day before collection
  - 2) Appliances require a pre-paid fee to be paid at the Clerk's Office at least 24-hours in advance
  - 3) Electronics are no longer collected curbside as they must be recycled.

Please visit Outagamie County Solid Waste web site for electronics disposal information:

<http://www.recyclemoreoutagamie.org/>

## **REMEMBER...ONLY RAIN DOWN THE DRAIN**

To keep storm water leaving your home or workplace clean, follow these simple guidelines:

- Use pesticides and fertilizers sparingly.
- Repair auto leaks.
- Dispose of household hazardous waste, used auto fluids (antifreeze, oil, etc.), and batteries at designated collection locations.
- Use a commercial car wash or wash your car on a lawn or unpaved surface.
- Clean up after your pet.
- Sweep up yard debris rather than hosing down areas. Compost or recycle yard waste when possible.
- Clean paint brushes in a sink, not outdoors. Properly dispose of excess paints through a household hazardous waste collection program.
- Sweep up and properly dispose of construction debris like concrete and mortar.

## **GENERAL REMINDERS**

**Terrace Trees:** It is a good idea to water trees regularly in the fall – especially newly planted trees.

**Archery Range:** The Archery Range in Memorial Park is open for public use during normal park hours. Normal park hours are daily from 7:00am to 11:00pm. If you are the last person to leave – turn off the lights, please! This is important in the fall, especially after the leaves start to drop.

**Mail Boxes:** For those mailboxes at curbside, please make sure that the front face of your mailbox is located behind the back of curb.

**Winter Parking Restrictions:** Winter parking restrictions begin December 1<sup>st</sup>. From December 1<sup>st</sup> through April 1<sup>st</sup>, parking on the street is prohibited from 2am to 6am.

**We're hiring for our NEW  
store in Combined Locks**

**Hiring Guest and Food Service  
coworkers to start immediately**

*apply  
online:* **kwiktrip.jobs** *keyword:* **1061**

**J.T. SCHMIDT  
Plumbing  
INC.**


*Performance Rich, People Strong  
Commercial Statewide Plumbing  
Design Services*

**1-920-788-7315**  
**jim@jtschmidt.com**  
419 S. Washington St., Combined Locks, WI. 54113

**Wendy Diedrich, CISR**

**AUTO • HOME • BUSINESS • LIFE**

225 N. Richmond Street, Suite 106  
Appleton, WI 54911  
Phone 920.733.7331 • Fax 920.733.2444  
[www.diedrichagency.com](http://www.diedrichagency.com) • [wendy@diedrichagency.com](mailto:wendy@diedrichagency.com)

**Robinson  
FLORIST & GREENHOUSES**

**PROUD PLANT SUPPLIER FOR THE VILLAGE OF COMBINED LOCKS**

444 S Washington Street, Kimberly WI  
Phone: 920-788-5244  
Website: <http://robinsonflorists.com/>



## HAPPY HALLOWEEN

Trick or Treat hours are  
5:00pm to 7:00pm  
October 31<sup>st</sup>



## THANKSGIVING WEEK

### Garbage & Recycling Collection Changes

Tuesday collection: No change for trash collection

Thursday collection: Trash collected Wed, 11/25

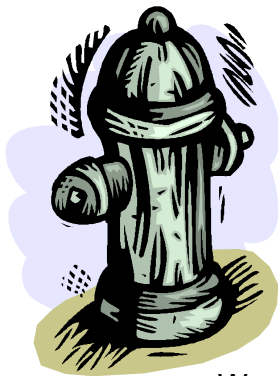
Recycling collected Fri, 11/27

### Tire Collection

### \*\*\*NOTE early September pickup dates\*\*\*

Tire collection dates for 2020 are Tuesday, September 15<sup>th</sup> and Thursday, September 17<sup>th</sup>. Place tires curbside on your normal garbage collect day. Limit of 10 car tires or smaller per residence.

### COMBINED LOCKS WATER UTILITY HYDRANT FLUSHING



The Combined Locks Water Department will begin semi-annual water main/hydrant flushing on Monday, September 21<sup>st</sup>, 2020. The flushing will continue through Friday, September 25<sup>th</sup>, 2020.

The water main flushing will remove most of the natural minerals, such as iron, that are harmless but will discolor water. If you see our Public

Works Department personnel working in your area, use little, or if possible, no water for ½ hour to ¾ of an hour to insure that water has "settled down" - so that the discoloration is not drawn into your water system. If you do find discoloration in your system, stop using water for about ½ hour - then draw off the discolored water through the **cold water faucet only**. Our best advice is for you to wait until after 4:00 p.m. before washing clothes to minimize potential discoloration.

Thank you for your cooperation. Combined Locks Water Utility

# Lox Club

## Fine Food & Cocktails

Open at 4:30 Tues - Sun.

### 788-4401

Cty. Tk Z  
591 State Street  
Combined Locks

## J.J. MAGEE DUMPSTERS



(920) 915-5341

- Fast Response, Reasonable Rates
- Residential, Construction, Commercial
- 10-30 Yard Containers • 24 Hr/7 Day Service
- Estate Clean-Outs, Clean-ups, Remodeling, Roofing
- Locally owned & operated, Serving the Fox Valley area



WHERE YOUR HEALTH IS OUR PRIORITY!

## Boots CHIROPRACTIC & Wellness Center, S.C.

(920) 997-9700

1020 Truman St. Suite B  
Kimberly, WI 54136

[www.BootsChiropractic.com](http://www.BootsChiropractic.com)

- State of the art, highly researched instrument adjustments and cold laser therapy
- Most insurance plans accepted
- Personal, Sports, Auto and Work related injuries
- Sports Wellness Program
- Quality Family Care



Dr. James R. Boots ~ Dr. William J. Boots ~ Dr. Matthew J. Boots

[BootsChiropractic.com](http://BootsChiropractic.com) (920) 997-9700 [facebook.com/BootsChiropractic](https://facebook.com/BootsChiropractic)

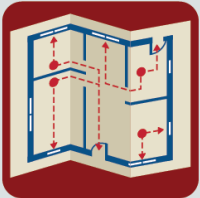
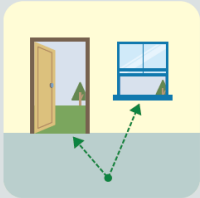





## **FIRE DEPARTMENT NEWS**

Protect Your Family



How fast does fire move? Very fast. You could have less than 2 minutes to get out safely once the smoke alarm sounds.

### **7 steps to practicing your escape plan**

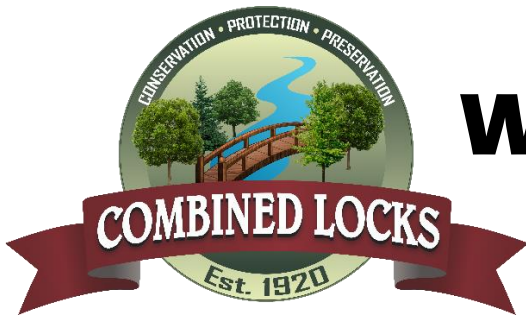
<b>1</b>  Draw a map of your home. Include all doors and windows.	<b>2</b>  Find two ways out of every room.	<b>3</b>  Make sure doors and windows are not blocked.	<b>4</b>  Choose an outside meeting place in front of your home.
<b>5</b>  Push the test button to sound the smoke alarm.	<b>6</b>  Practice your drill with everyone in the home.	<b>7</b>  Get outside to your meeting place.	

For more information about escape planning, visit:  
[www.usfa.fema.gov](http://www.usfa.fema.gov) and [www.firepreventionweek.org](http://www.firepreventionweek.org).

Click here to  
add image.



The Official Sponsor of Fire  
Prevention Week Since 1922



# WE NEED YOUR HELP!

We need your family stories and memories to fill this once-in-a-lifetime Combined Locks Centennial Memory Book.

Sharing your stories with us is easy. You can complete this questionnaire (use additional paper if necessary) and mail it or drop it off at the Combined Locks Civic Center, 405 Wallace St, Combined Locks WI 54113. You can also send the information in an email to: [gieser@combinedlocks.org](mailto:gieser@combinedlocks.org) The requested information is only a sample. You can skip some parts or add more – it's all up to you and what you want others to read about your family and how you landed in Combined Locks. Photographs are encouraged but not required. Submit your story to us ASAP!

Family Name \_\_\_\_\_

Family Members \_\_\_\_\_

\_\_\_\_\_

Year Moved to Combined Locks \_\_\_\_\_

Where We Live in Combined Locks \_\_\_\_\_

What Brought Us to Combined Locks \_\_\_\_\_

\_\_\_\_\_

What Keeps Us in Combined Locks \_\_\_\_\_

\_\_\_\_\_

Neighbors/Neighborhood/School Memories \_\_\_\_\_

\_\_\_\_\_

Did you participate/attend the 50<sup>th</sup> or 75<sup>th</sup> Combined Locks Jubilee?      Yes      No

What is your best/fondest memory of the jubilee you attended? \_\_\_\_\_

\_\_\_\_\_

Other Memories About Life in Combined Locks \_\_\_\_\_

\_\_\_\_\_

\_\_\_\_\_

Fill in the blank: Remember When \_\_\_\_\_

\_\_\_\_\_

Submitted by: \_\_\_\_\_

Print First Name & Last Name

Telephone

Email Address

Still not sure what to write? We have samples from another municipality's memorial book that we are happy to share with you. Just Ask!

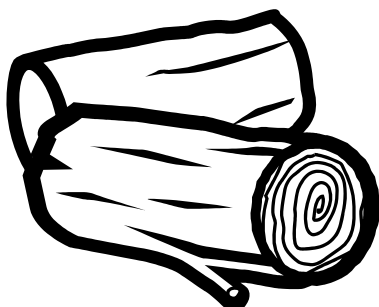


## **2021 Summer Baseball/Softball/Tee-Ball Season**

Every player who was registered for the 2020 season, which was canceled, is considered a RETURNING player for 2021. Letters will be mailed to returning ball players in December. The letter will include registration dates and times for the 2021 season.



## **FIREWOOD CUTTING**



Over the next several months, there will be an opportunity for residents to obtain some firewood from trees that will be removed in the Village. If you are interested in cutting some firewood for your personal use, please contact the Clerk's Office at 788-7740 ext. 201.

A signed waiver is required.



The Village of Combined Locks is full of great people – many of who volunteer to help beautify the community by maintaining boulevards, planting flowers and shrubs, picking up litter, donating funds to maintain planting beds, and installing flags for holidays.

Please join us in a round of applause to ALL who help make Combined Locks a wonderful place to live! Thank You!

**And we can always use more help! If you are interested in adopting a planting bed or installing flags on holidays, please contact the Clerk's Office at 920-788-7740 ext. 0 or [gieser@combinedlocks.org](mailto:gieser@combinedlocks.org)**

#### **Boulevard Buddies**

Nick & Peggy Popp  
Brad & Sheila Schinke  
Jesse & Lori Rose  
Alice Claypool  
Jim & Patti Slemkes  
Cherie Krenke & Bob Corey  
Jill Hahn  
Kevin & Barb Coleman  
Troy & Diane Verhagen  
Pat Dercks  
Jeff & Michelle Lauson

#### **Petal Pushers**

Judy Roberts  
Robinson Florists – Craig Robinson

#### **Flag Flyers**

Kamps Krew – Doug DeValk  
George & Margaret Bosch Family  
Boy Scouts – Troop 41  
Venture Crew  
"516" Club

#### **All-Around Allies**

Bill Boots  
Dennis Jansen  
Combined Locks Advancement Association  
Dorothy Stoflet



## 2020-2021 PARK RENTAL

### **Memorial Park:**

Rental fee \$100 for residents; \$200 for non-residents

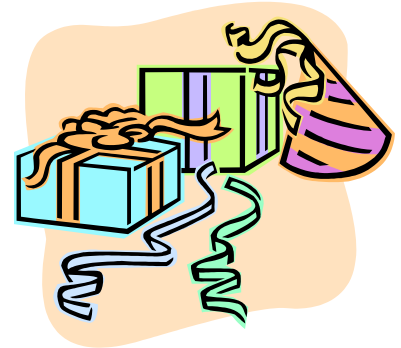
### **Lindberg Park:**

Rental fee \$50 for residents; \$100 for non-residents

### **Van Zeeland Park:**

Not available for rentals in 2021 due to construction

A separate security deposit equal to the rental fee is required for all park rentals. Residents of Combined Locks may reserve parks as of 11/02/20. Non-residents may reserve parks as of 04/01/21.



## 2020-2021 MARK VAN THIEL ROOM RENTAL

The Mark Van Thiel Room (formerly called the Community Room) is available for family parties, bridal and baby showers, birthday parties, etc. It has a capacity for 75 people and includes a small kitchen with refrigerator, sink and stove. The rental fee for residents is \$100. The rental fee for non-residents is \$150. A separate security deposit equal to the rental fee is required for all rentals.

Residents of Combined Locks may request 2021 room reservations as of 11/02/20. Non-residents may request 2021 reservations as of 01/04/21.

Call today to set up a **FREE initial screening** with **Dr. Dan Handrich**



Dr. Dan Handrich



**Beck-Thibodeau**  
CHIROPRACTIC CLINIC

1221 E. Northland, Appleton • 920-954-1002

Open until 7:00pm on Mondays and Thursdays!

[www.BeckThibodeauChiropractic.com](http://www.BeckThibodeauChiropractic.com)

— Serving the community since 1990 —

**Schmitt's Tickets, Inc.**

617 Buchanan Road • Combined Locks, WI 54113  
Specializing in Packer Tickets, Milwaukee Bucks, Brewers,  
Wisconsin Badgers: Football & Basketball



Concerts - WWE - We Do All Events Local & National

**JOHN SCHMIDT**

**920.759.6266**

Visit us at: [www.schmittstickets.com](http://www.schmittstickets.com)  
Cell Phone: 920.841.8278

**SPEEDY**  
**CLEAN**  
Drain & Sewer

- Residential Drains
- Commercial Drains
- Industrial Drains
- Municipal Drains

**BILL PEOTTER**  
Service Manager

**(920) 734-4707**  
**1-800-371-4707**

FULL SERVICE **IN-HOUSE** Solutions that  
help **SHAPE** OUR COMMUNITIES

**McMAHON**  
ENGINEERS / ARCHITECTS

SINCE 1909  
NEENAH WISCONSIN  
ILLINOIS | INDIANA

920 751 4200  
[MCMGRP.COM](http://MCMGRP.COM)

*We hope you continue to patronize the local businesses that choose to advertise with the Village of Combined Locks. Their business cards are printed throughout the newsletter. The Village is grateful for their support.*





VILLAGE OF COMBINED LOCKS  
405 WALLACE STREET  
COMBINED LOCKS WI 54113  
920-788-7740

[www.combinedlocks.org](http://www.combinedlocks.org)

PRSRT STD  
U.S. POSTAGE  
PAID  
PERMIT NO. 4  
Combined Locks, WI 54113

## POSTAL PATRON

### CONTACT US

MONDAY – FRIDAY

7:30AM TO 4:00PM

#### Combined Locks Civic Center

Administrator-Clerk-Treasurer  
Deputy Clerk-Treasurer  
Administrative Assistant  
Fire Chief  
Recreation Director

#### 405 Wallace Street

Racquel Shampo-Giese  
Sarah Lesnick  
Jim Reese  
Ken Wiedenbauer  
Barbara VandenHeuvel

#### 920-788-7740

[gieser@combinedlocks.org](mailto:gieser@combinedlocks.org)  
[lesnicks@combinedlocks.org](mailto:lesnicks@combinedlocks.org)  
[reesej@combinedlocks.org](mailto:reesej@combinedlocks.org)  
[clfd1@combinedlocks.org](mailto:clfd1@combinedlocks.org)  
[vandenheuvelb@combinedlocks.org](mailto:vandenheuvelb@combinedlocks.org)

#### Public Works Department

Director of Public Works

#### 300 Park Street

Ryan Swick

#### 920-788-7744

[swickr@combinedlocks.org](mailto:swickr@combinedlocks.org)

#### Police Service with

Outagamie County Sheriff's Office

#### 405 Wallace Street

Sgt. Tyler Van Handel  
\*\*Emergency\*\* 911

#### 920-832-5000

[tyler.vanhandel@outagamie.org](mailto:tyler.vanhandel@outagamie.org)

**Village Board Meetings 1<sup>st</sup> and 3<sup>rd</sup> Tuesdays 6:30pm Combined Locks Civic Center Council Chambers**  
All Village Board meetings are open to the public, and there is an opportunity for anyone in attendance to ask any question of the Village Board. The Village President will ask for Public Comment for matters not on the agenda. This is your opportunity to ask questions about things happening in our community.